

Citrus

Eye Cream

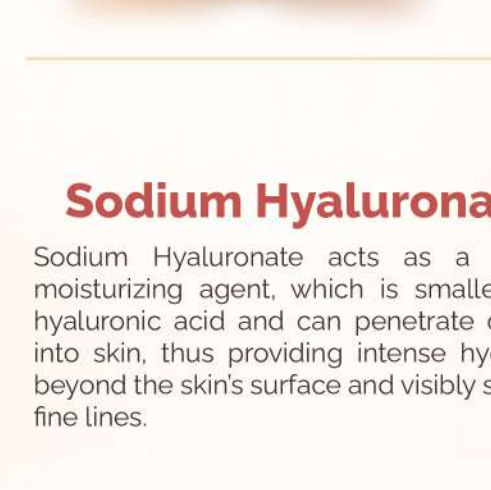


INTRODUCTION

Citrus Eye Cream is rich in amazing actives to strengthen the delicate eye area. It is an easy-to-absorb eye cream that helps reduce signs of aging, minimize dark circles and repair mature, stressed skin around the eyes.

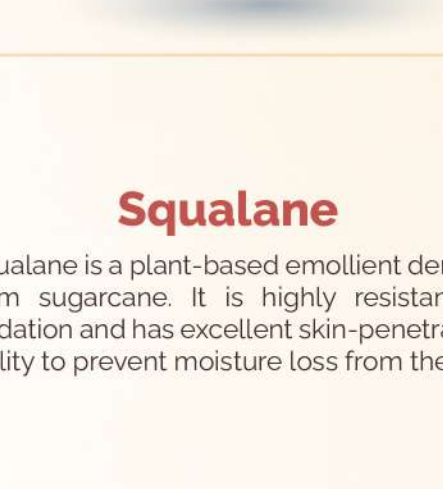
Prunus Persica (Peach) Gum Extract possesses tightening and lifting properties, thereby reducing the appearance of fine lines and wrinkles. **Citrus Aurantium Dulcis (Orange) Peel Oil**, **Niacinamide** and **Alpha-Arbutin** help lighten the dark circles around the eyes. **Sodium Hyaluronate** and **Squalane** provide intense hydration beyond the eye skin surface. **Glutathione** provides anti-aging benefits to reduce the skin aging caused by daily micro-movements.

MAIN INGREDIENTS



Prunus Persica (Peach) Gum Extract

Prunus Persica (Peach) Gum Extract is extracted from the Yulong Snow Mountain. It possesses a tightening and lifting effect to skin, thereby reducing the appearance of fine lines and wrinkles.



Sodium Hyaluronate

Sodium Hyaluronate acts as a potent moisturizing agent, which is smaller than hyaluronic acid and can penetrate deeper into skin, thus providing intense hydration beyond the skin's surface and visibly smooth fine lines.

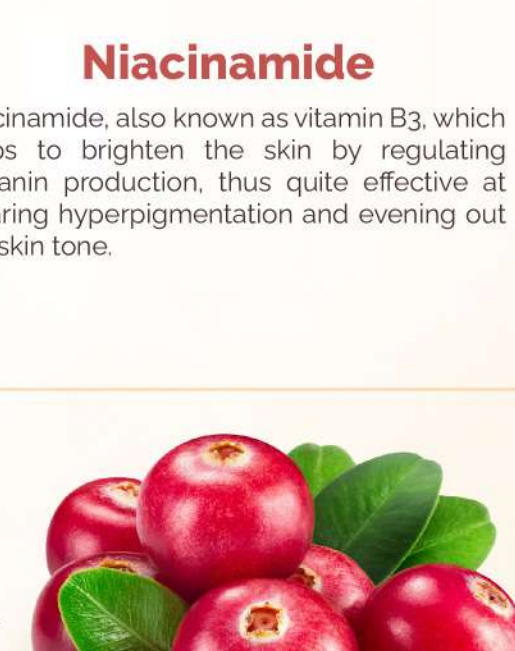


Squalane

Squalane is a plant-based emollient derived from sugarcane. It is highly resistant to oxidation and has excellent skin-penetrating ability to prevent moisture loss from the skin.

Citrus Aurantium Dulcis (Orange) Peel Oil

Citrus Aurantium Dulcis (Orange) Peel Oil is a powerful antioxidant, which helps promote skin lightening and delay the sign of skin aging by minimizing free radical damage.

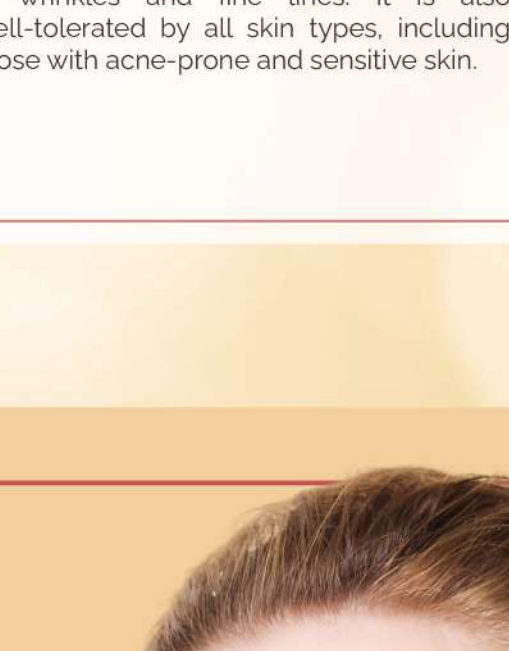


Niacinamide

Niacinamide, also known as vitamin B3, which helps to brighten the skin by regulating melanin production, thus quite effective at clearing hyperpigmentation and evening out the skin tone.

Alpha-Arbutin

Alpha-Arbutin is a potent whitening ingredient that reduces UV-induced pigmentation and free radicals, resulting in a brighter-looking complexion.



Glutathione

Glutathione helps to protect the skin against oxidative damage to reduce the appearance of wrinkles and fine lines. It is also well-tolerated by all skin types, including those with acne-prone and sensitive skin.

MAIN FUNCTION



Reduce fine lines & wrinkles



Improve firmness of skin around eyes



Lighten dark eye circles



Skin hydration

PH

5.0 - 7.0

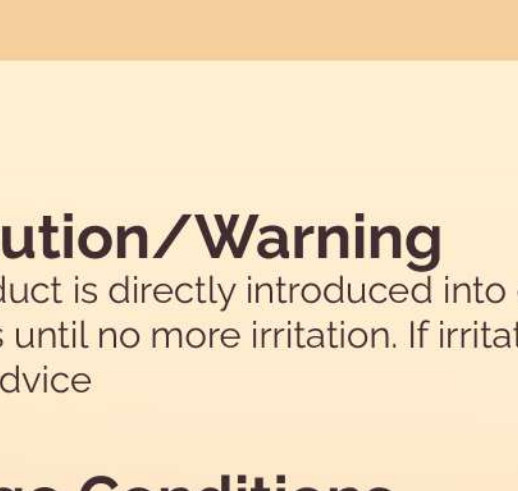
APPEARANCE

Opaque cream

SUITABLE SKIN

All skin types

DIRECTION FOR USE

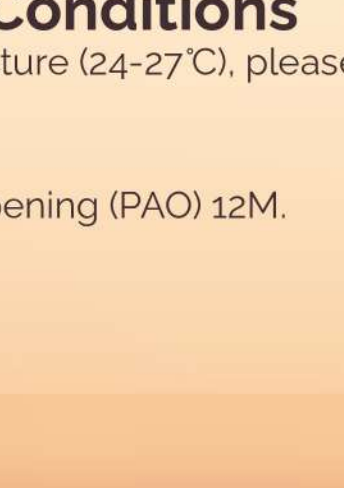


Apply a pea-sized amount evenly around the eye area (under eyes, outer corners, eyelids). Tap and smooth in until thoroughly absorbed. Use it twice a day.

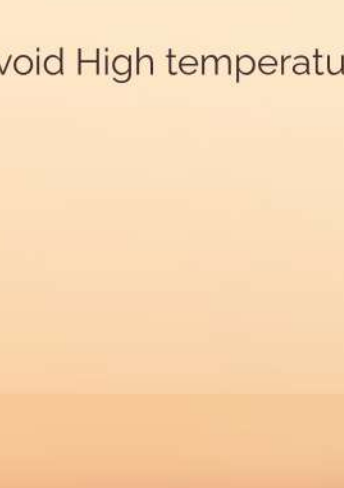
FREE OF



Paraben-free



Phthalate-free



SLS-free



SLES-free

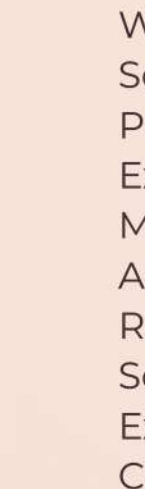


Free of synthetic colorants



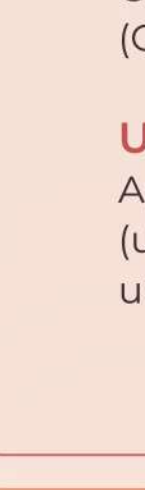
Precaution/Warning

If the product is directly introduced into eyes, immediately rinse eyes until no more irritation. If irritation persists, seek medical advice



Storage Conditions

Room Temperature (24-27°C), please avoid High temperature storage.



Period-after-opening (PAO) 12M.

PRODUCT INFORMATION

Brand

SKINLAB

Product name

CITRUS EYE CREAM

Ingredients

Water, Glycerin, Sodium Hyaluronate, Butylene Glycol, Squalane, Polyacrylamide, C13-14 Isoalkane, C9-11 Pareth-6, Phenoxethanol, Prunus Persica (Peach) Gum Extract, Niacinamide, Alpha-Arbutin, Sodium Metabisulfite, Tranexamic Acid, Sodium Citrate, Citric Acid, Aminopropyl Ascorbyl Phosphate, Geranium Robertianum Extract, Paeonia Suffruticosa Root Extract, Scutellaria Baicalensis Root Extract, Thymus Serpyllum Extract, Alpinia Katsumadai Seed Extract, Glutathione, Chlorphenesin, 1,2-Hexanediol, Citrus Aurantium Dulcis (Orange) Peel Oil, Ethylhexylglycerin

Usage

Apply a pea-sized amount evenly around the eye area (under eyes, outer corners, eyelids). Tap and smooth in until thoroughly absorbed. Use it twice a day.

PRODUCT EFFICACY

