

Instant Soothing Mask



Instant Cooling & Repair

Introduction

Instant Soothing Mask actively relieves irritation and redness while boosting the skin's resistance to external irritation. It offers a pleasantly cooling effect immediately and aids in repairing and rejuvenating the skin's deeper layers, making it less sensitive and effectively addressing dry and sensitive skin.

Enriched with **Artemisia Princeps Leaf Extract**, **Leptospermum Scoparium (Manuka Honey) Extract**, **Gluconobacter/Honey Ferment Filtrate** and **Portulaca Oleracea Extract**, the mask provides powerful soothing and repairing benefits for damaged skin, resulting in a smoother and more radiant complexion. **Rhodiola Rosea Root Extract** revitalizes fatigued skin and restores skin balance, while **Mentha Piperita (Peppermint) Oil** delivers a refreshing cooling sensation to further soothe irritation.



Main Ingredients



Rhodiola Rosea Root Extract

- Helps revitalize tired skin
- Enhances the skin's natural moisture barrier, making the skin look fresher and more radiant



Artemisia Princeps Leaf Extract

- Has an anti-itching effect on sensitive skin
- Helps recover damaged skin, leaving a radiant complexion



Leptospermum Scoparium (Manuka Honey) Extract

- Provides moisturizing and antimicrobial benefits to combat acne-causing bacteria
- Soothes irritated skin and promotes healing



Gluconobacter/Honey Ferment Filtrate

- Contains fermented honey for its soothing and skin-repairing properties
- Promotes a smoother and brighter complexion



Portulaca Oleracea Extract

- Heals wounds and calms irritated skin
- Has strong anti-aging properties to diminish the appearance of wrinkles and scarring



Mentha Piperita (Peppermint) Oil

- Provides a cooling sensation
- Helps soothe skin irritation

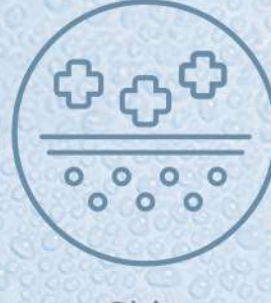
Main Function



Instant Skin Soothing



Skin Moisturizing



Skin Repairing



pH

5.0 - 7.0

Appearance

Translucent serum

Suitable Skin

All skin types

Direction for use



Step 1

Unfold and place sheet mask onto clean, freshly washed skin, pressing gently to ensure full contact around eye, nose, and mouth area.

Step 2

Leave on for around 10-15 minutes remove and wipe off excess.

For damage skin, it can used daily for a period of **3-5 days** for optimal results.



Precaution/Warning

If the product is directly introduced into eyes, immediately rinse eyes until no more irritation. If irritation persists, seek medical advice.



Storage Conditions

Room Temperature (24-27°C), please avoid High temperature storage.



Period-after-opening (PAO) 12M.

Product Information

Brand

SKINLAB

Product Name

INSTANT SOOTHING MASK

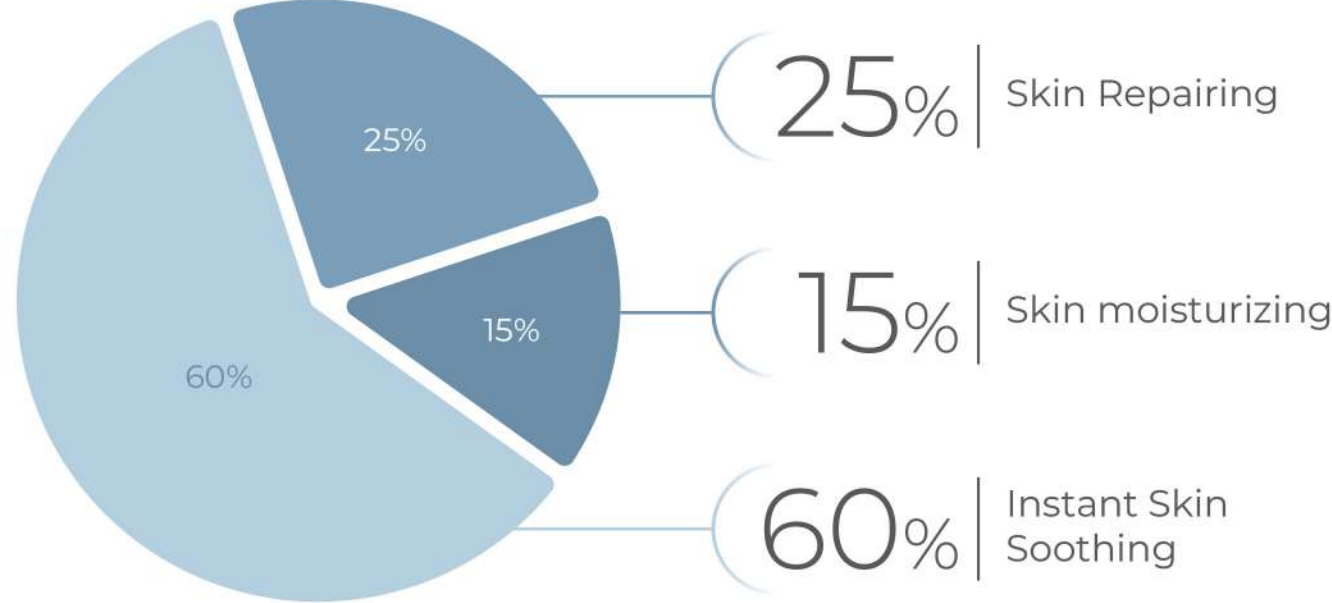
Ingredients

Water, Propanediol, Glycerin, Butylene Glycol, Rhodiola Rosea Root Extract, Artemisia Princeps Leaf Extract, Leptospermum Scoparium (Manuka Honey) Extract, Gluconobacter/Honey Ferment Filtrate, Portulaca Oleracea Extract, Polysorbate 20, Phenoxyethanol, Xanthan Gum, Squalane, Mentha Piperita (Peppermint) Oil, Ethylhexylglycerin

Usage

Unfold and apply sheet mask onto clean, freshly washed skin, pressing gently to ensure it adheres well around eye, nose, and mouth. Leave on for around 15-20 minutes, then remove and wipe off excess. For damage skin, it can used daily for a period of 3 - 5 days for optimal results.

Product Efficacy



SKINLAB BIOCHEM RESOURCES (M) SDN BHD
(1500793-V)

☎ 019-713 9121

☎ 019-773 9121

🌐 www.skinlab.com.my

✉ customer@skinlab.com.my

📍 5, Jalan Ekoperniagaan 2/5, Taman Ekoperniagaan, 81100 Johor Bahru, Johor, Malaysia.