

384 Glutathione Mask



Moisturizing • Anti-aging • Brightening

Introduction

384 Glutathione Mask is a fast-absorbing facial mask that helps to effectively moisturize, whitening and anti-aging. Glutathione acts as the main ingredient to provide anti-aging benefits to reduce the appearance of skin aging. **Niacinamide** and **Alpha-Arbutin** help to whiten the skin to even out the skin tone. **Sodium Hyaluronate** acts as a potent moisturizing ingredient that can penetrate deeper into skin to retain skin moisture. **Citrus Reticulata (Tangerine) Peel Extract** helps to improve the transparency and brightness of the skin.

Main Ingredients



Glutathione

Glutathione helps to protect the skin against oxidative damage to reduce the appearance of wrinkles and fine lines. It is also well-tolerated by all skin types, including those with acne-prone and sensitive skin.

Niacinamide

Niacinamide, also known as vitamin B3, which helps to brighten the skin by regulating melanin production, thus quite effective at clearing hyperpigmentation and evening out the skin tone.

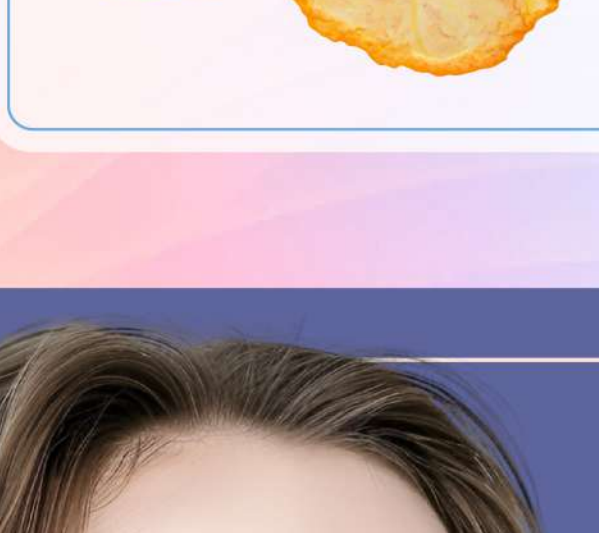


Alpha-Arbutin

Alpha-Arbutin is a potent whitening ingredient that reduces UV-induced pigmentation and free radicals, resulting in a brighter-looking complexion.

Sodium Hyaluronate

Sodium Hyaluronate acts as a potent moisturizing agent, which is smaller than hyaluronic acid and can penetrate deeper into skin, thus providing intense hydration beyond the skin's surface.



Citrus Reticulata (Tangerine) Peel Extract

Citrus Reticulata (Tangerine) Peel Extract is an ingredient that provides whitening, moisturizing, anti-aging and anti-oxidation benefits, thus giving the skin a luminous glow. It helps to improve the transparency of the stratum corneum and the brightness of the skin.



Main Function



Skin Moisturizing



Anti-aging



Skin Brightening

pH

5.0 - 6.0

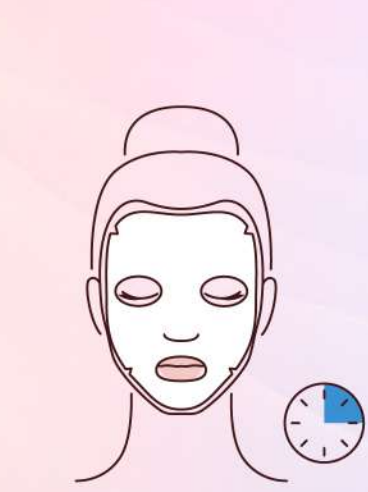
Appearance

Transparent serum.

Suitable Skin

All skin types

Direction for Use



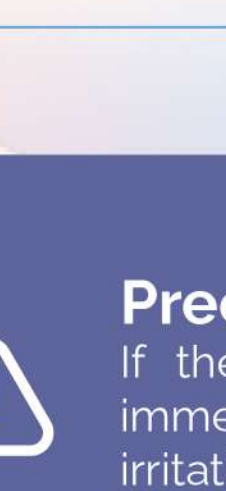
Step 1

Unfold and place sheet mask onto clean, freshly washed skin, pressing gently to ensure full contact around eye, nose, and mouth area.



Step 2

Leave on for around 10-15 minutes remove and wipe off excess.



Step 3

Use a solution as a lotion or cream by massaging into the neck and decollete.



Precaution/Warning

If the product is directly introduced into eyes, immediately rinse eyes until no more irritation. If irritation persists, seek medical advice.



Storage Conditions

Room Temperature (24-27°C), please avoid High temperature storage.

Product Information

Brand

SKINLAB

Product name

384 GLUTATHIONE MASK

Ingredients

Water, Propanediol, Glycerin, Xanthan Gum, Polysorbate 20, Phenoxyethanol, Citrus Reticulata (Tangerine) Peel Extract, Niacinamide, Alpha-Arbutin, Sodium Metabisulfite, Tranexamic Acid, Sodium Citrate, Citric Acid, Aminopropyl Ascorbyl Phosphate, Geranium Robertianum Extract, Paeonia Suffruticosa Root Extract, Scutellaria Baicalensis Root Extract, Thymus Serpyllum Extract, Alpinia Katsumadai Seed Extract, Glutathione, Fragrance, Ethylhexylglycerin

Usage

Unfold and place sheet mask onto clean, freshly washed skin, pressing gently to ensure full contact around eye, nose, and mouth area. Leave on for around 10-15 minutes remove and wipe off excess. Use a solution as a lotion or cream by massaging into the neck and decollete.

Product Efficacy

