

# AROMA

## Mask



*Moisturizing • Healing Wounds • Rebalance*

### INTRODUCTION

**Aroma Mask** is a fast-absorbing mask that adds Korean Traditional Herbal Ingredients, which allows the nutrients in the mask to better penetrate and absorb into the skin, therefore helping to effectively moisturize, hydrate, soothe and heal wounds. This mask contains **Rhodiola Rosea Root Extract**, **Artemisia Princeps Leaf Extract** and **Portulaca Oleracea Extract** to soothe and recover the damaged skin barrier function, thereby reducing skin inflammation as well as relieving skin itchiness. Besides, **Sodium Hyaluronate** acts as a potent moisturizing ingredient that can penetrate deeper into skin to retain skin moisture. The addition of **Citrus Aurantium Bergamia (Bergamot) Fruit Oil**, **Lavandula Angustifolia (Lavender) Oil** and **Salvia Sclarea (Clary) Oil** help to improve the skin condition by rebalancing sebum content and improving the skin function.

### MAIN INGREDIENTS



#### Sodium Hyaluronate

Sodium Hyaluronate acts as a potent moisturizing agent, which is smaller than hyaluronic acid and can penetrate deeper into skin, thus providing intense hydration beyond the skin's surface.

#### Portulaca Oleracea Extract

Portulaca Oleracea Extract is a potent soothing ingredient to heal wounds and calm the irritated skin. It has strong anti-aging properties to diminish the appearance of wrinkles and even scarring.



#### Rhodiola Rosea Root Extract

Rhodiola Rosea Root Extract helps to revitalize tired skin and restore skin balance, thereby making skin look fresher and more radiant.

#### Artemisia Princeps Leaf Extract

Artemisia Princeps Leaf Extract has anti-itching effect on sensitive skin and recovery effect on damaged skin, thus leaving skin with radiant complexion.

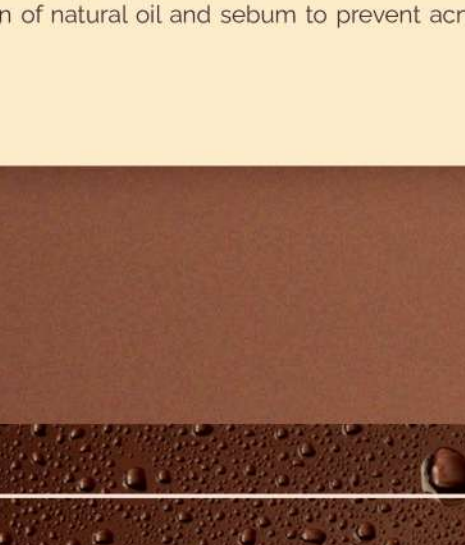


#### Citrus Aurantium Bergamia (Bergamot) Fruit Oil

Citrus Aurantium Bergamia (Bergamot) Fruit Oil is ideal for those who have overactive sebum production to rebalance sebum content and leave the skin feeling clean.

#### Lavandula Angustifolia (Lavender) Oil

Lavandula Angustifolia (Lavender) Oil is effective for inhibiting skin inflammation and improving the skin function, thereby enhancing the skin comfort.



#### Salvia Sclarea (Clary) Oil

Salvia Sclarea (Clary) Oil exhibits a cooling sensation to soothe the irritated skin. It also has the ability to stabilize the production of natural oil and sebum to prevent acne breakouts.

### MAIN FUNCTION



Skin Moisturizing



Skin Soothing & Healing Wounds



Rebalance Sebum Content

PH

5.0 - 6.0

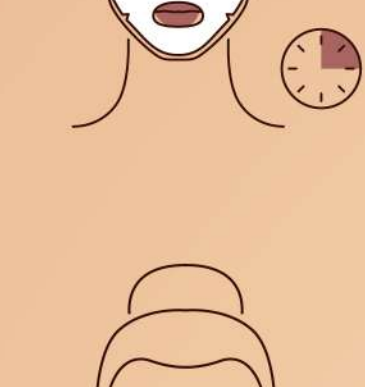
### APPEARANCE

Translucent thick serum

### SUITABLE SKIN

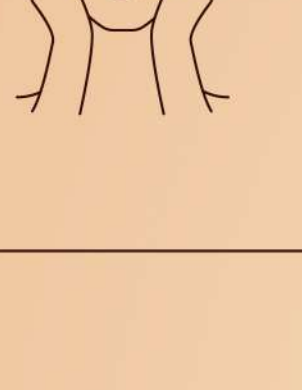
All skin types

### DIRECTION FOR USE



#### Step 1

Unfold and place sheet mask onto clean, freshly washed skin, pressing gently to ensure full contact around eye, nose, and mouth area.



#### Step 2

Leave on for around 10-15 minutes remove and wipe off excess.



#### Step 3

Use a solution as a lotion or cream by massaging into the neck and decollete.



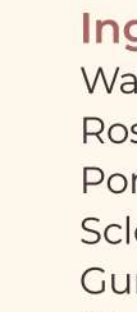
#### Precaution/Warning

If the product directly introduced into eyes, immediately rinse eyes until no more irritation. If irritation persists, seek for medical advice.



#### Storage Conditions

Room Temperature (24-27°C), please avoid High temperature storage.



Period-after-opening (PAO) 12M.

### PRODUCT INFORMATION

**Brand**  
SKINLAB

**Product name**  
AROMA MASK

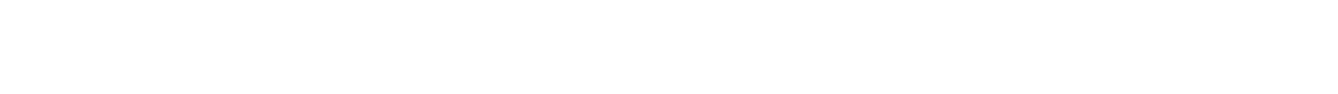
#### Ingredients

Water, Propanediol, Butylene Glycol, Polysorbate 20, Rhodiola Rosea Root Extract, Artemisia Princeps Leaf Extract, Allantoin, Portulaca Oleracea Extract, Sodium Hyaluronate, Hydrolyzed Sclerotium Gum, Pentylene Glycol, Caprylyl Glycol, Xanthan Gum, Panthenol, Squalane, Citrus Aurantium Bergamia (Bergamot) Fruit Oil, Lavandula Angustifolia (Lavender) Oil, Salvia Sclarea (Clary) Oil.

#### Usage

Unfold and place sheet mask onto clean, freshly washed skin, pressing gently to ensure full contact around eye, nose, and mouth area. Leave on for around 10-15 minutes remove and wipe off excess. Use a solution as a lotion or cream by massaging into the neck and decollete.

### PRODUCT EFFICACY



SKINLAB BIOCHEM RESOURCES (M) SDN BHD (1500793-V)



SKINLAB

☎ 019-713 9121

☎ 019-773 9121

🌐 www.skinlab.com.my

📧 customercare@skinlab.com.my

📍 5, Jalan Ekoperniagaan 2/5, Taman Ekoperniagaan, 8100 Johor Bahru, Johor, Malaysia.